

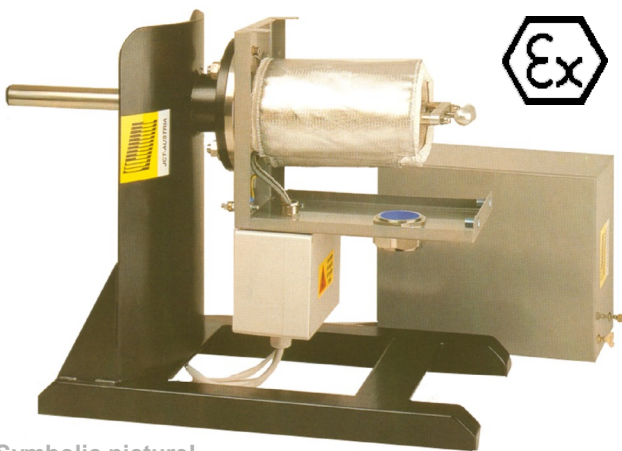
- Sampling Conditioning Systems
- Process Analytics
- System Integration
- Gas Generators
- FTIR-Analysers



conditioning systems

CONDITIONING SYSTEMS

Gas Sampling Probe JES 301 EX



Symbolic picture!

FEATURES

- ◆ EX Version - Zone 1 or Zone 2
- ◆ Rugged Construction
- ◆ Easy filter replacement
- ◆ Low maintenance
- ◆ Self limited EX-heater
- ◆ Calibration inlet (option)
- with Non Return Valve
- ◆ Back Purge (option)

GENERAL

The JES 301 EX series of heated gas sampling probe is used in Zone 1 or Zone 2 classification areas and is designed for continuous use with extractive sampling systems even where the sample contains dust and aerosols.

The JES 301 EX is available in several versions which may be custom configured to meet user's specific requirements. Versions include backpurge option, calibration gas inlet addition with Non Return Valve (NRV) on the sample inlet and a combination of both of these.

The JES 301 EX incorporates a non-corrosive heated, replaceable ceramic filter element with a filter porosity of 2 micron. The filter element is mounted in an electrically heated and thermally isolated stainless steel housing, which is installed in a weather protection housing. The heated line series JH can be easily connected to the JES 301 EX by a movable PG42 fastening screw.

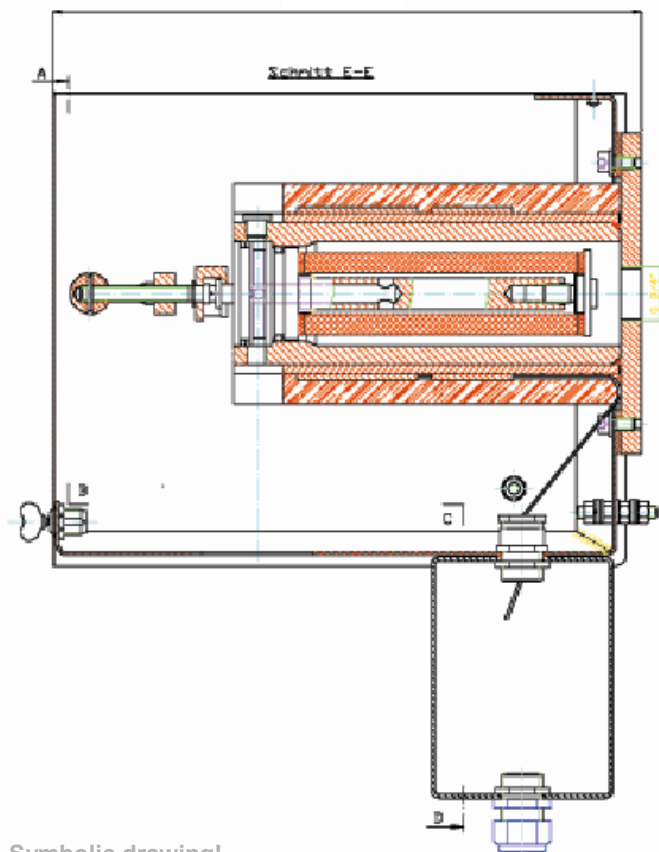
TECHNOLOGY

The complete unit, consisting of the heated filter head, mounting flange and probe assembly, can be mounted anywhere horizontally or vertically. The probe can be connected with a standard DN65 PN6, Form B flange directly. The flange material is stainless steel. When mounted horizontally, the JES 301 EX should be inclined at an angle of 5° to 15° to allow any condensate formed to drain away from the filter head. A broad range of different materials for In-Situ probe tubes, and large In-Situ - pre filters make the JES 301 EX versatile in application.

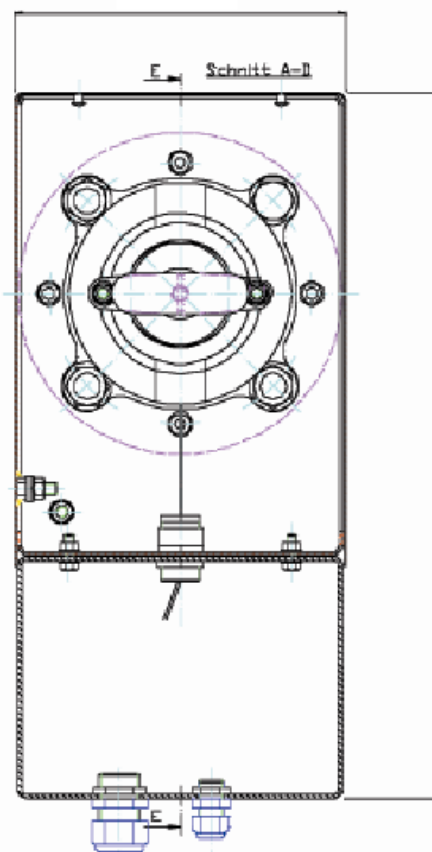
FEATURES

The unit is extremely robust and well engineered to provide many years operational service in harsh environments. The filters can be replaced easily without any tools and without disconnecting the heated line.

TECHNICAL DATA



Symbolic drawing!



SPECIFICATIONS	
Filter element	SiC; pore size 2 µm; 40/20 x 135 mm
Operating pressure	50 ... 150 kPa abs.
Mounting flange Option	DN 65, PN6; DIN 2573; SS316 2" ANSI-flange, 150lb.
Mounting angle	recommended 5°-15° incline to allow condensate drainage
Sample gas inlet	G3/4" female thread
Sample gas outlet	1/8" NPT female thread
Test gas connection	1/8" NPT female thread
Gas wetted parts	1.4571, SiC, Viton
Factory setting	120°C @ 20°C

SPECIFICATIONS	
Ambient temperature	20°C ... +40°C
Power consumption	Approx. 80 Watt
Heater element	Self limited
Dual power supply	110VAC to 230VAC 50/60 Hz
Junction box	EEx approved box
Electrical connection	Clamps max. 2,5 mm ²
Protection class	IP65 for electronic
Weight	Approx. 12 kg
Dimensions	160 x 425 x 290 mm (WxHxD)
Protection class	II 2 G Ex d IIC T3 II 2 D Ex tD A21 IP65 T135°C

Specification subject to change without notice.

PDS_E_JES301_EEx_04/10_Rev. 0

JCT Analystechnik GmbH

Werner Heisenberg-Straße 4 A-2700 Wiener Neustadt
Tel. +43 (0) 2622 / 87201 Fax +43 (0) 2622 / 872011
E-Mail: sales@jct.at Web: www.jct.at

